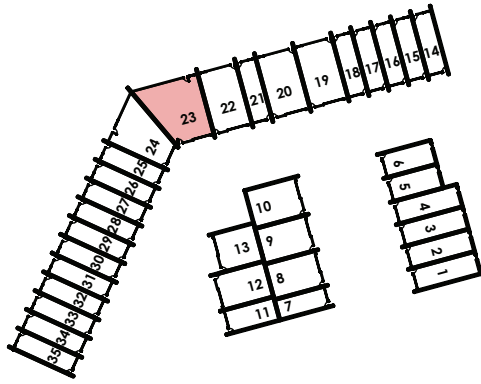


# J

## FLOOR PLAN



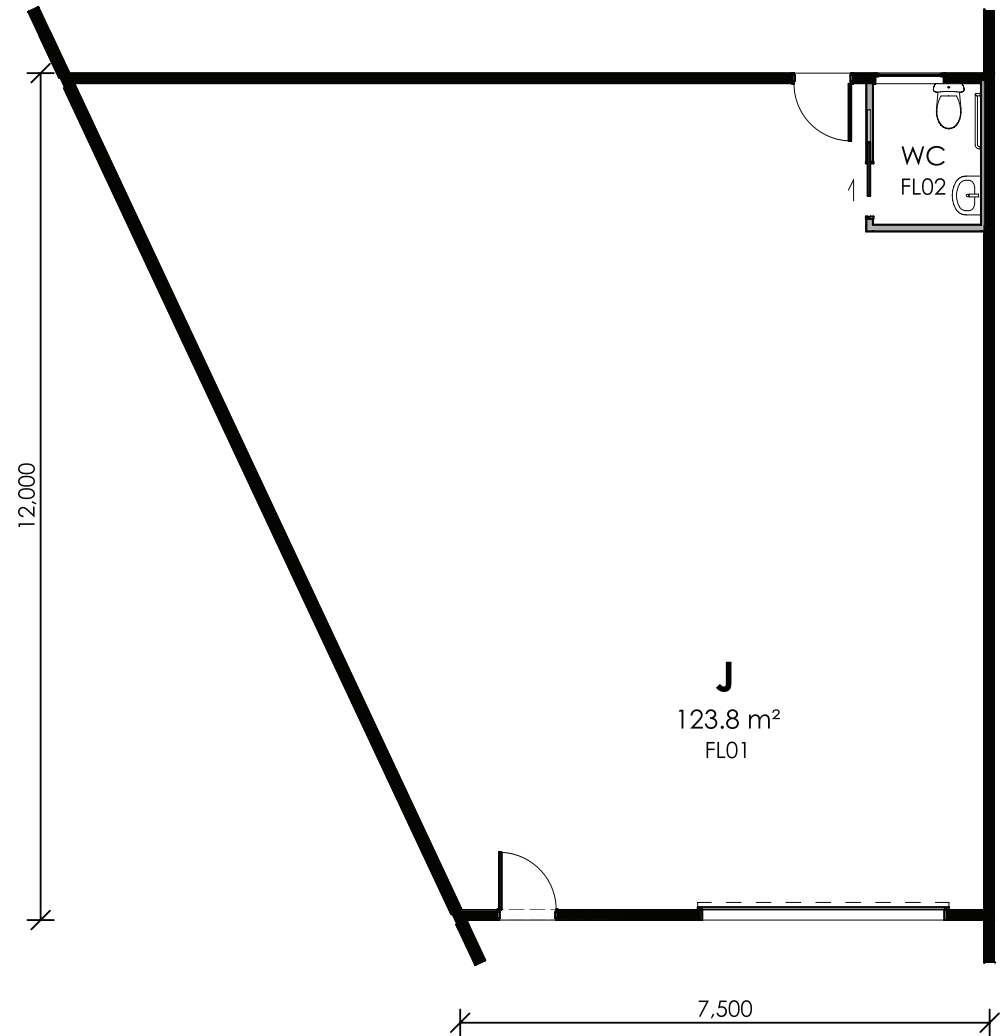
UNIT  
23

AREA  
123.80 m<sup>2</sup>

### FLOORING

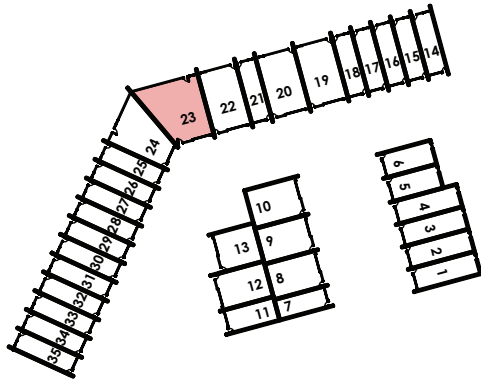
**FL01** CONCRETE WITH SEALER FINISH

**FL02** SELECTED NON-SLIP VINYL



# J

## ELEVATION



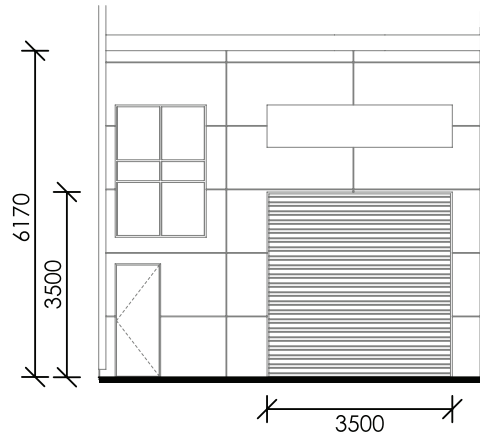
UNIT  
**23**

AREA  
**123.80 m<sup>2</sup>**

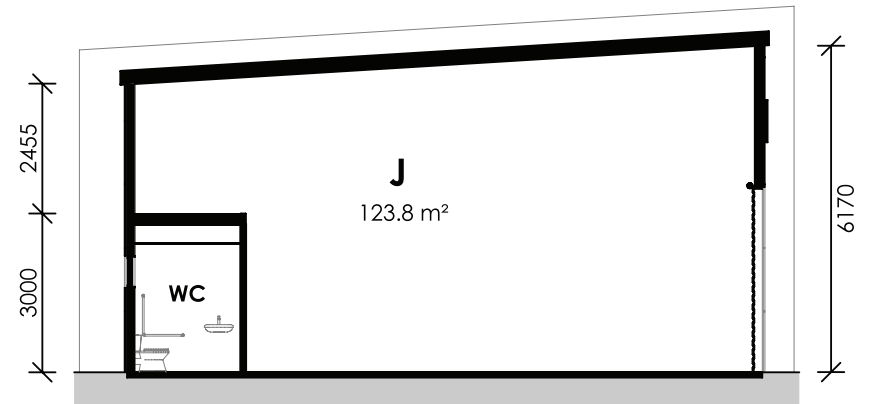
FLOORING

**FL01** CONCRETE WITH SEALER FINISH

**FL02** SELECTED NON-SLIP VINYL



### ELEVATION



### SECTION

**INDUSTRY**  
SILVERDALE

All plans, layouts, pictures, renderings, information and details included in this document are indicative only and may change at any time in accordance with final designs of the project, regulatory approvals and planning permissions. Prospective purchasers are advised to seek independent legal advice.

# **FLEXIBLE FREEHOLD WORKSPACES. SELLING NOW.**

**SALES SUITE OPEN BY APPOINTMENT  
AT 63 FOUNDRY ROAD, SILVERDALE.**

**PLEASE CONTACT THE SOLE AGENTS.**

## **RICHARD MOORS**

**021 613 447**

**[richard.moors@bayleys.co.nz](mailto:richard.moors@bayleys.co.nz)**

## **CHRISTOPHER MOORE**

**021 039 7099**

**[christopher.moore@bayleys.co.nz](mailto:christopher.moore@bayleys.co.nz)**

COMMERCIAL NORTH SHORE LTD, BAYLEYS, LICENSED UNDER THE REA ACT 2008

